

Centre for AIDS Reagents

Data Sheet

DESCRIPTION:	Recombinant p17/24 protein (B-clade consensus sequence)
REPOSITORY REFERENCE:	ARP694.1
CHARACTERISTICS:	Recombinant p17/24-B protein is expressed as His tag-fusion protein in <i>E.coli</i> using expression vector pET24 and purified using Talon Superflow metal affinity resin (Clontech).
PRESENTATION:	50ug. In PBS +10% glycerol
NOTE:	Prepared for AVIP collaborative study. Non AVIP members are restricted to 1 vial per request.
PURITY:	See Fig.1 for SDS-PAGE and Fig.2 for Western blot analysis.
STORAGE:	Store at -70 °C or less. Avoid multiple freeze-thaw cycles as product degradation may occur.
SOURCE:	FIT Biotech Oyj Plc Eesti Filiaal, Tartu, Estonia
ACKNOWLEDGEMENTS:	Publications should acknowledge the donor of the reagent and the Centre for AIDS Reagents. Suggested wording can be found on our website in the “Acknowledgement” section at:- www.nibsc.ac.uk/spotlight/centre_for_aids_reagents.aspx Please also ensure that you send us a copy of any papers resulting from work using reagents acquired through CFAR, this can be by e-mail or printed copy.

PROTEIN SEQUENCE:

MGARASVLSGGELDRWEKIRLRPGGKKKYKCLKHIVWASRELERFAVNPGLLETSEGCRQILGQLQPSL
QTGSEELRSLYNTVATLYCVHQKIEVKDTKEALDKIEEQNKSKKKAQQAADTGNSSQVSQNYPIVQ
NLQGQMVHQAI SPRTLNAWVKVVEEKAFSPEVIPMFSALSEGATPQDLNMLNTVGGHQAAMQMLK
ETINEEAAEWDRHLHPVHAGPIAPGQMREPRGSDIAGTTSTLQEQIGWMTNPPPIPVEIYKRWIILGLNK
IVRMYSPTSILDIRQGPKPEFRDYVDRFYKTLRAEQASQEVKNWMTETLLVQANPDCKTILKALGPAA
TLEEMMTACQGVGGPGHKARVLVEHHHHHH

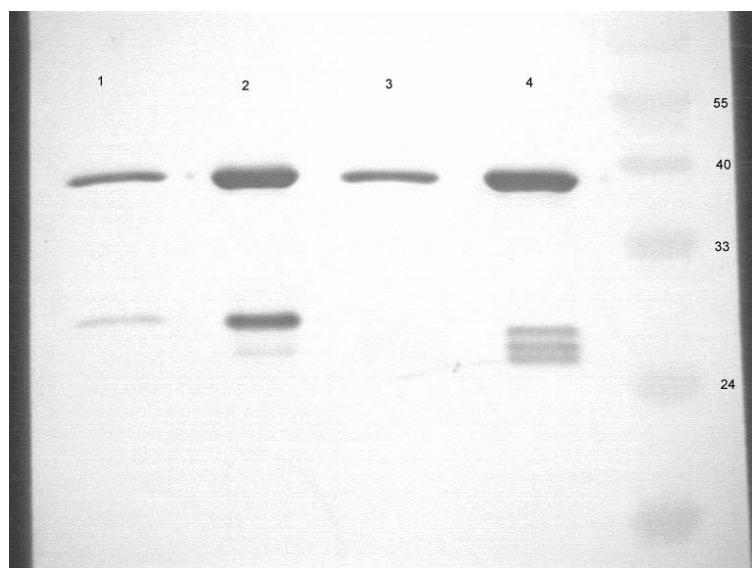


Figure 1. Western blot analysis of p17/24 proteins, detected with the p24 specific monoclonal antibody 05-001, (Quattromed Ltd, Tartu, Estonia)

Lane 1- p17/24-B protein, 100 ng loaded

Lane 2- p17/24-B protein, 500 ng loaded

Lane 3- p17/24-C protein, 100 ng loaded

Lane 4- p17/24-C protein, 500 ng loaded

Molecular weight marker proteins are on the right side of the gel.

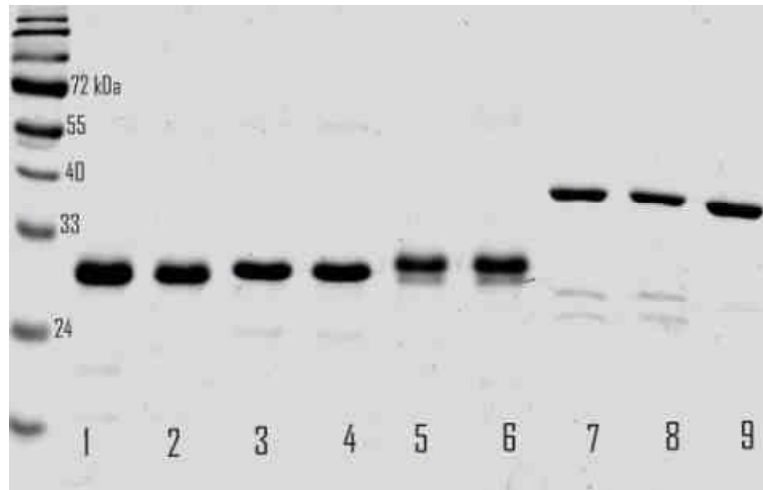


Figure 2. SDS-PAGE analysis of purified proteins (Coomassie staining)

Lane 1- Nef-A 1µg

Lane 2- Nef-A low endo, 1µg

Lane 3- Nef-B 1µg

Lane 4- Nef-B low endo 1µg

Lane 5- Nef-C 1µg

Lane 6- Nef-C low endo 1µg

Lane 7- p17/24-B 1µg

Lane 8- p17/24-B low endo 0.8µg

Lane 9- p17/24-C 1µg